



# DIAMOND GREEN ENERGY CORPORATION



**ADOPT PROGRESS PROSPER**

## About us

**Diamond Green Energy Corporation** has been established with a vision to enlighten life of the people who are living in dark for ages.

We focus on rural segment in the state of Bihar, Orissa, Jharkhand and West Bengal. Once we achieve a satisfaction of making effective change in life of rural india, then only we will think of moving to cities and urban sector.

We are providing green energy solution to the people with the use of Solar energy and LED lights. Our expertise is to design a cost effective solution for the client and supply/install the system to the entire satisfaction of the customer. We do not leave the customer here itself, rather we commit ourselves to provide service for the life time on reasonable cost basis.

We are also creating employment by giving training to local youths so that they can service the systems and earn a livelihood.

We welcome like minded people to join our mission which has made a humble beginning.

Our endeavour is to inculcate integrity, ethics and innovative thinking in our team members whether they are employees or business associates or channel partners.

Diamond Green Energy Corporation strives for complete satisfaction of the customers and works towards building a long lasting relationship.

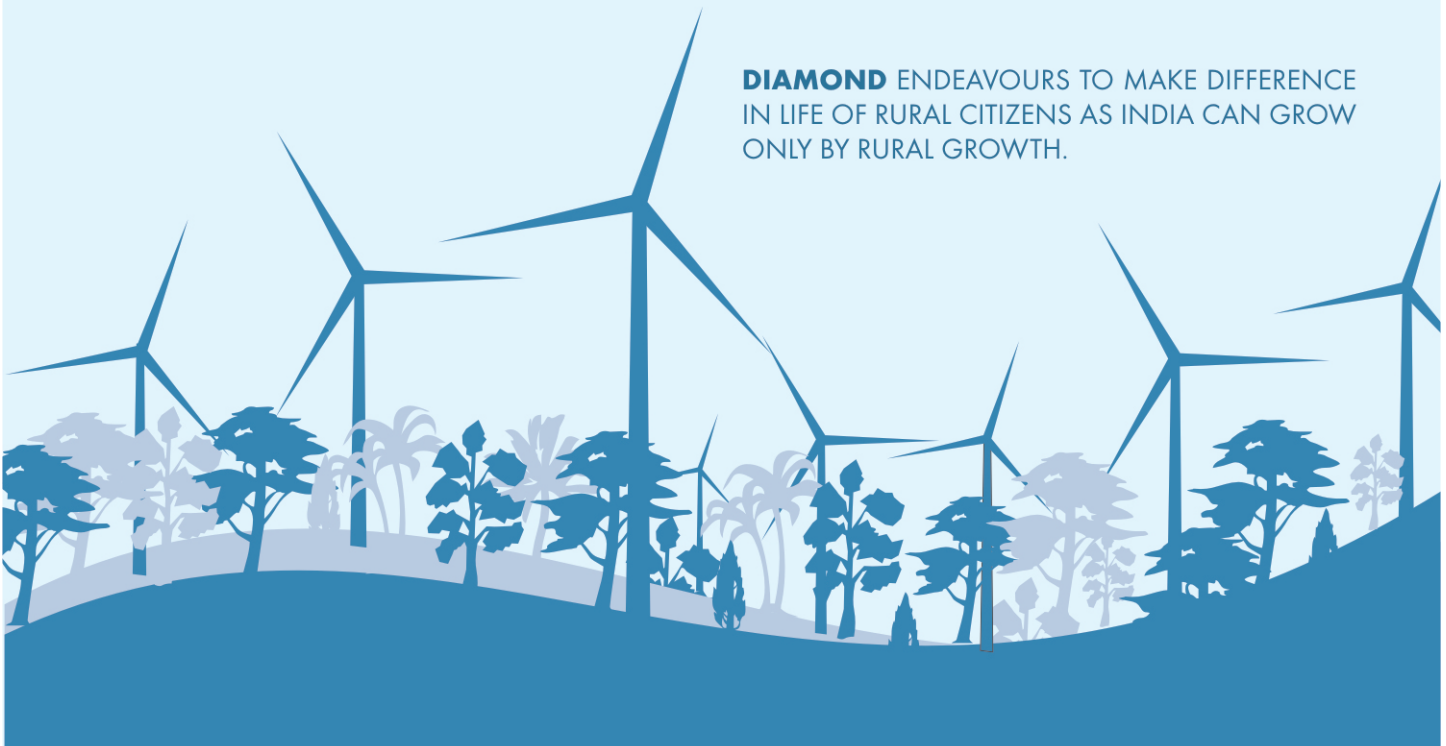
We have solution for any problem related to energy and its application.

**USE GREEN ENERGY AND SECURE YOUR FUTURE**

**BREATHE FRESH AIR AND HELP THE NEXT GENERATION BE HEALTHY**

**USE LED LIGHTS AND SAVE ENERGY.**

**DIAMOND** ENDEAVOURS TO MAKE DIFFERENCE  
IN LIFE OF RURAL CITIZENS AS INDIA CAN GROW  
ONLY BY RURAL GROWTH.





## Why Green Energy

- Solar energy is available in abundance and it will end only when the world ends.
- It is available at no cost. Fortunately India has abundance of solar days. Approximately 300 days in a year.
- It does not create any pollution.
- No maintenance cost as solar modules are developed under strict quality measures with cells imported from Germany.
- Payback period is 4 to 5 years, whereas life is 25 years. So the customer gets electricity almost at negligible cost for more than 20 years.
- Use of green energy prevents global warming.
- It also saves energy requirement thus helping divert electricity to other priority areas..

## LED Light Features

- Power saving of 60% to 90% on existing lighting load.
- Instant switch on - high pressure discharge lamps have a delay in Re-starting, LED have no such problem.
- Maintenance free life of more than 15 years.
- LED lights work better on lower temperatures as compared to CFL and Halogens.
- Payback period is three years and thus the light can run for another 15 years without any cost.
- Vibration resistant - being solid state LED lamps can withstand shocks and vibrations unlike fragile glass Filament and Discharge Lamps.
- Due to no heat dissipation the power consumption of air conditioner will also reduce by 40%
- LED lights work between 90 V to 240 V whereas CFL/FTL will not work below 190V.
- Due to massive reduction in electrical load, other appliances such as Generators, UPS capacity requirement will also reduce. This makes solar application viable.
- LED lights are true green lights and thus carbon credit can be availed.
- Effective visibility of light output comparable to different types of conventional lamp luminaires.
- High optical conversion efficiency of 90% as compared to 50% of CFL/Metal halide luminaires.
- Light output can be directed in specific directions by the use of total Internal reflection lenses. In conventional luminaires lot of lumens are lost due to scattering of light.
- No Infra Red or ultra violet radiation. They do not contain any mercury harmful to human life as CFL/ Metal halides do.



## Solar Photovoltaic Module

- IEC 61215 Approved Solar Modules
- Mono/Multi Crystalline panels
- TUV Approved Junction Boxes.
- CE Marking and as per IEC 61730
- Module Ratings from 10wp to 300wp



## Charge Controller

The charge controller is especially for use in small solar systems where no load disconnect is required, as in yachts, caravans, etc.

The charging regime provides best battery treatment at reasonable cost. The electronic circuit is equipped with a microcontroller that provides high-efficiency charging technology.



- Charging display with LED
- Large terminals (up to 16mm<sup>2</sup>)
- PWM-regulation
- Boost & float charging method
- Solid-state overvoltage protection
- Reverse polarity protection

## Storage Battery

We provide full range of batteries suitable for Solar/Inverter application from 7.5 AH to 2000AH for 12V / 24V Systems. These battery are made of tubular plates of Selenium Lead of Highest Purity. The technology used is of highest standard available in the world. All the models enjoy a warranty period of more than a year.



## Hybrid Inverter

These inverters are used for running appliances which require AC Supply. Dual charging facility is available in these inverters. Built in over charge protection is provided.

**LOAD CHART**

Application	625VA / 12V		860VA / 12V		1500VA / 24V	
	A	B	A	B	A	B
<b>Fan</b>	2	2	4	3	8	7
<b>Tubelight</b>	3	3	3	5	6	8
<b>TV</b>	1	-	1	-	1	-
<b>Computer</b>	-	1	-	1	-	1
<b>CFL</b>	2	2	3	-	3	-



**Applications :-** Computer, Television, Fans, Room coolers, CFL, Refrigerator etc.  
Depends upon the capacity of Digital Solar Home UPS you have chosen

**Note :** The above load chart calculations are indicative values only. The actual calculation depends upon manufacturer specification - Tubelight of 40W - CFL of 15W - 19-21" TV - 14" TFT Monitor - 48mm Ceiling fan (3 blades, 1000 1200mm sweep) When PC is running TV is not recommended



## Portable Lanterns

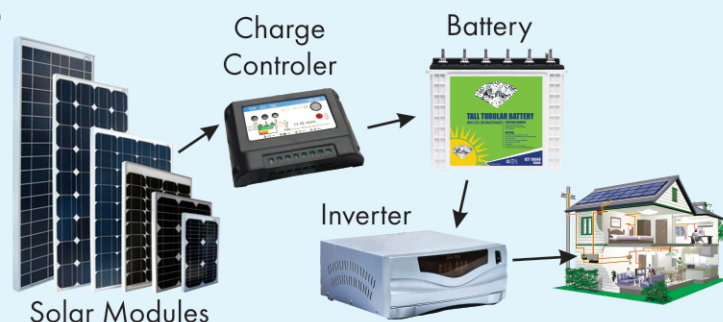
These lanterns are designed to replace kerosene lanterns being used in villages & Residential Areas. The Economics of cost works out to less than a rupee as compared to 20 Rs. per day in Kerosene lanterns. These Lanterns also have facility of Charging mobiles,. Lanterns can be charged by AC Supply also .



## Home Lighting Systems

We Provide home lighting Solution from 100 watt hour per day to 10 KWH per day.

These systems are custom designed as per requirement of users



## Street Light Systems

Street light systems are available with automatic on & off Facility. They are available with 6 Watt to 240 Watt LED luminaires. They have been designed with an autonomy of two days. All the Components & Products used are of international standards.

**Facility of Regular Maintenance is available at reasonable cost.**

## Water heating Systems

- Sum Design for uniform heat gain and zero cold spots.
- Solar Keymark German and ISI Certified collectors.
- Super Sleek Design with UV resistant exterior finish.
- HCFC free polyurethane Insulation.
- No Grouting required for installation.
- Easy Self Support stands for User Friendly Installation.
- Suitable for Flat Roof and Slope Roof Installation.
- Models are available for Soft & Hard Water
- Hot Water is stored in Stainless Steel Tanks.
- The Water Temperature is Retained for 72 hours at 60 Degrees



## Solar Cooker/Oven

Solar cooking means cooking in open with sun rays. Solar cooking is absolutely safe and protects the house wife from the hazards she faces while cooking on gas or kerosene stove. It is this knowledge and sense of security that enables her to concentrate on the task at hand. She saves lot of time to spend on her hobbies and with her near and dear ones which brings happiness and peace in the family.



### FEATURES

Designed to suit modern nuclear family concept, is safe, economical and free from pollution menace.

Solar Oven cooks unattended and saves time.

Food never over cooks.

Economically weaker sections save on firewood/ kerosene/ coal or LPG while rich urban consume natural food to live happily without drugs and lesser diseases.

Solar ovens are portable and energy consumed is free.

No chance of milk spilling over or food burn even if is left over the whole day.

## Solar Deep Freezer

A device described as a "refrigerator" maintains a temperature a few degrees above the freezing point of water; a similar device which maintains a temperature below the freezing point of water is called a "freezer". Our present generation is more conscious about power consumption. With proud we can say that we are the first supplier of body condensing freezer in India with very low power consumption that one can think. We have developed our New Generation Freezers, which can save so much power. It is taking only 1/5th of power as compared to other market freezers. It tested and proved in Indian market since 1992. Solar Deep freezer is a versatile freezer with user needs in mind. It has different temperature settings for different types of food items like meat, ice cream, water bottles, milk, boiled items etc. It can reach up to minus 30 degrees Celcius so that the texture of food articles stored is preserved.



## Solar Pump



Solar submersible pumps are highly efficient, low voltage, DC powered, diaphragm type positive displacement pumps designed specifically for water delivery in remote locations. They operate on 12 to 30 volts of DC current that may be supplied from a variety of independent power sources including solar panels, wind generators, batteries or any combination of the three. Power requirements can be as little as 35 watts. Constructed of marine grade bronze and 304 stainless steel, these pumps are the highest quality submersible pumps in their class.



## LED Lighting

LED's (Light Emitting Diodes) were first developed for practical use in 1962. The primary use until the last decade was for indicators and low lighting applications. The first high powered LED was developed in Japan during mid 1990s. Today, commercial LED's are emitting around 110-120 lumens/watts and recently the Bilkent University in Turkey claims to have developed an LED with an output of 300 lumens/watts. Keeping in View the energy saving and environment friendly factors. LED is now dubbed as "Green Lighting".

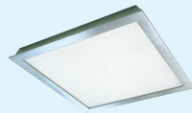
### Indoor Lighting



LED Bulb  
3W/5W/7W



Down Lighter  
6W/9W/12W



Recess/ Surface Panel  
1'x1', 1'x2', 2'x2'

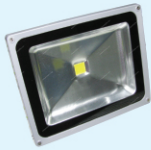


Tube Lights  
9W/18W

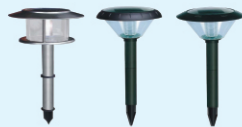


Spot Light  
5W/7W

### Outdoor Lighting



Flood Light  
10W/20W/30W/60W



Solar Garden Light  
1W only



Led Strip Light  
Auto/Manual  
Remote Control



Street light  
12W/24W/36W/72W

### Industrial Lighting



Bay Light  
50W/100W



Bay Light  
109W/137W/164W



Strip Light Used In LED Sign Board



Down Light/Panel used in Office



Spot Light used in Jewellery shop



Bay Lights used in Industries



# DIAMOND GREEN ENERGY CORPORATION

**Head Office :** # 404, GH-16, Sector-20, Panchkula, Haryana  
Ph. : 91-172-4638404

**Regd. Office :** Old Thana Road, P.O. Haspura, Distt. Aurangabad (Bihar)

**Tel. :** 91-98150 67680, 87574 98772

**Email :** dgecorp@gmail.com





अब अपना घर रोशनी करें।  
वो भी बगैर किसी  
अतिरिक्त मासिक खर्च के



Committed to  
**Quality.**  
Committed to  
*You.*

**DIAMOND GREEN ENERGY CORPORATION**

**Regd. Office :** Old Thana Road, P.O. Haspura, Distt. Aurangabad (Bihar)

**Tel. :** 91-98150 67680, 87574 98772, 9934603881, 8092104883

**Email :** dgecorp@gmail.com

**Required :** Agents/Dealers/Sales Representative